



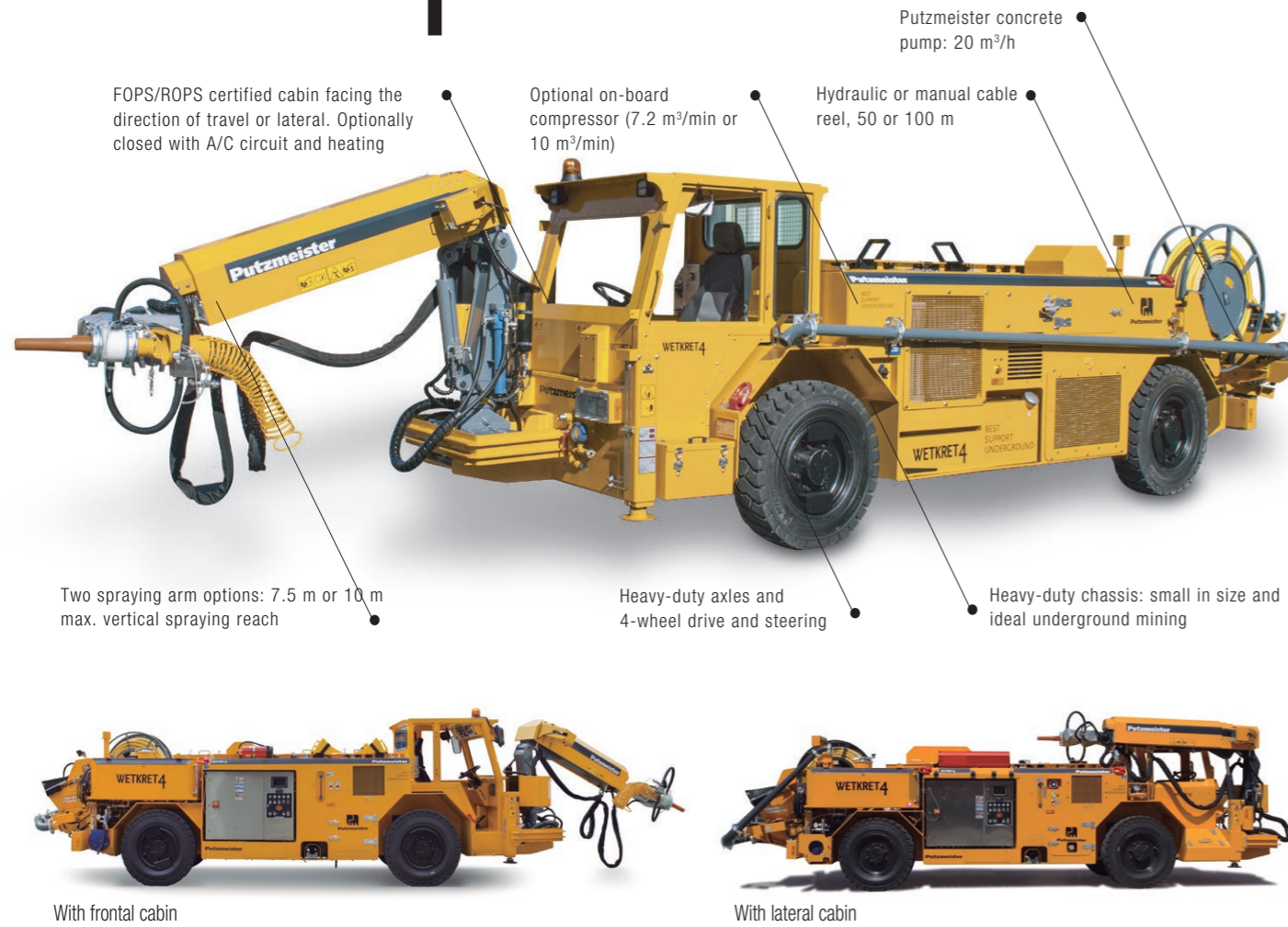
Putzmeister



Wetkret 4

Concrete spraying equipment

WETKRET 4

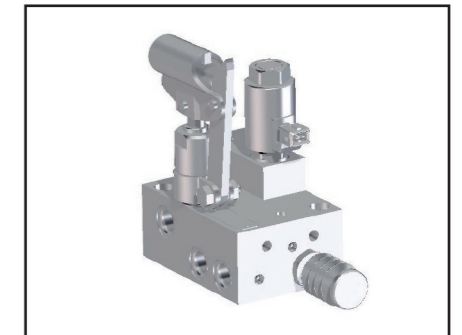


Two options of FOPS/ROPS-certified cabin

Wetkret 4 boasts two cabins, one facing the direction of travel and other lateral, according to your needs.

Subject to the customer's request, can be closed with A/C circuit and heating, protected with screens.

Both have the certification of FOPS (Falling Objects Protection Certificate) and ROPS (rollover protection).



Wetkret 4 is ideal for galleries in underground mining, thanks to its heavy-duty chassis with compact size, reduced turning radiuses and crab-mode.

It boasts two FOPS/ROPS certified cabin, one in the direction of the travel and other lateral, according to your needs.

The spraying arm also has two versions, adapting to your galleries requirements, one with a maximum vertical reach of 10 m and the other of 7.5 m.

The Putzmeister Wetkret 4 pump guarantees a homogeneous shotcrete application, to be able to ensure the required quality and layer thickness, as well as reducing rebound. Its concrete flow of 20 m³/h allows for increased productivity.

Wetkret 4 also comes equipped with automatic synchronization of the additive dosage with the concrete flow, ICVD hydrostatic transmission, an integrated air compressor and optimal weight distribution.

Key advantages

- Safe for application and transfer.
- Heavy-duty equipment for tough operating conditions.
- Optimal operation.
- Easy to maintain.

Visibility when reversing and in adverse conditions

Rear view camera with infrared and monitor in cabin. Up to four more cameras can be included.

LED spotlights (80 W).

Safe and ergonomic driving

Driving seat with presence sensor, seat belt and built-in suspension.

Safety-focused design

Diesel tank and the fuel lines separate from equipment hot spots.

Stability on any type of terrain

The hydraulically operated parts at the front part of the equipment allow its stability on any terrain, however irregular, guaranteeing a safer operation.

Emergency brake system

Wetkret 4 has an emergency, software-controlled brake system, automatically activated in dangerous situations.

Heavy-duty equipment



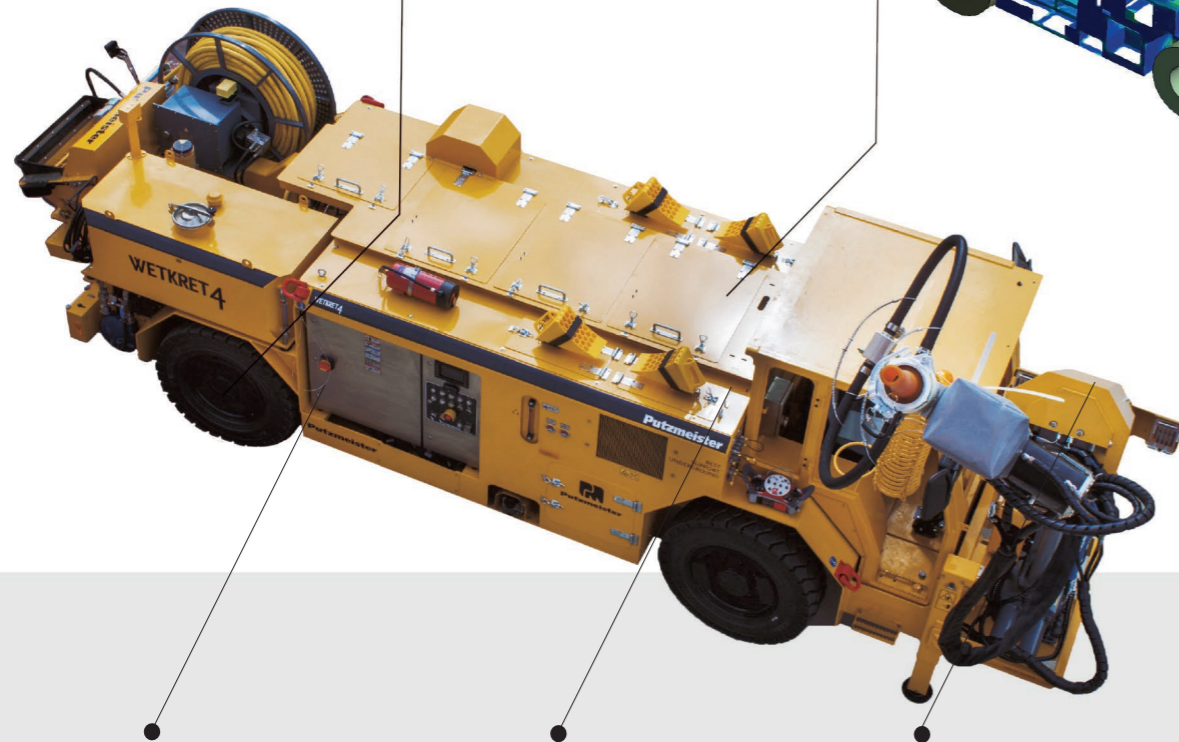
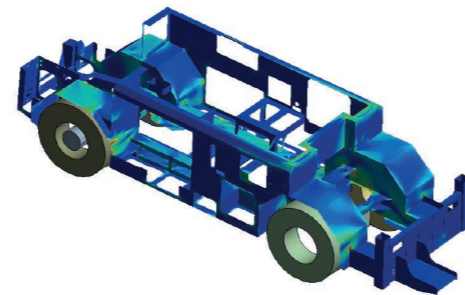
Optimal transmission

The continuously variable hydrostatic transmission system with automatic gears (ICVD) improves:

- Climbing ability.
- Traveling speed.
- Start acceleration.
- Fuel consumption.

Analysis of distribution of weights, loads and torque

For a suitable balance to improve the operating life of the equipment.



Heavy-duty axles tested in the Mixkret range, designed to withstand more than 3,000 kg of additional load.

Powerful motorization

- Available in Tier 3 or Tier 4f.
- With ACERT technology for:
 - Better emissions treatment.
 - Better consumption efficiency.
 - Greater injection performance.

Reinforced spraying arm

- Double rotation cylinder to reinforce the rotation area for bends and torques.
- Suspension system for transfer, guaranteeing a long service life for all joints.

Optimal operation



Display inside cabin

With information on the main operation, safety and maintenance parameters.



Automatic additive dosing

The amount of additive is adjusted to the pump flow from the same control panel or remote control, avoiding excess dosing and saving unnecessary costs.



Remote control

Dual radio remote control (Bluetooth) and cable (20 m).

All internal components have been specially treated with resins to protect them from humidity and high temperatures.



Concrete pump with VHS system and S-tube

Simple and robust pumping system designed by Putzmeister - the concrete pump manufacturer with 60 years of experience. Decreases pulsation for a perfect finish.



Easy maintenance



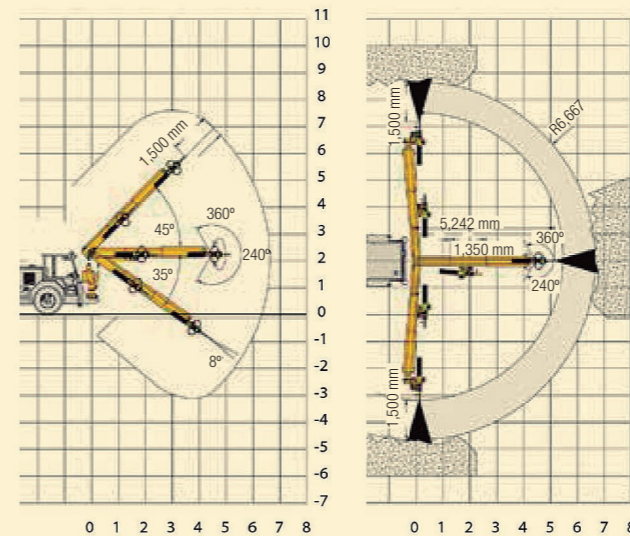
Design for durability

- 80% hydraulic circuit in rigid piping.
- Metal covers for protection of all jib features prone to being damaged by rebound.

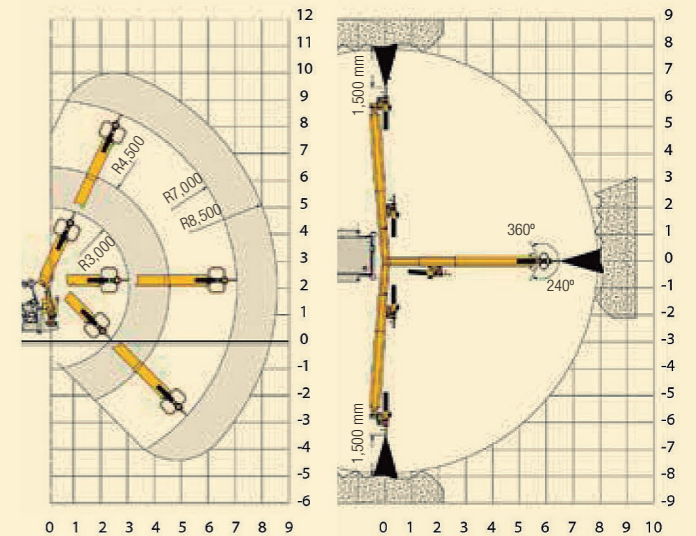
Data Sheet

Spraying arm reach diagrams

Putzmeister SA 8.1 LP



Putzmeister SA 10.1



Better access to components

- Chassis designed to enable access to all components from ground level.
- Removable side and top access doors.
- Cabin and electrical panel components designed by plug & play configuration.
- Single location for Minimesse sockets for quick hydraulic checks.



Spraying arm

Type	SA 8.1 LP	SA 10.1*
Max. spraying reach (vertical/horizontal)	7.5 m / 7 m	10 m / 8.5 m
Turntable turning angle (frontal/lateral cabin)	180° / 250°	180°
Spraying head rotation	360°	360°

* Only with frontal cabin

AL220 Projector

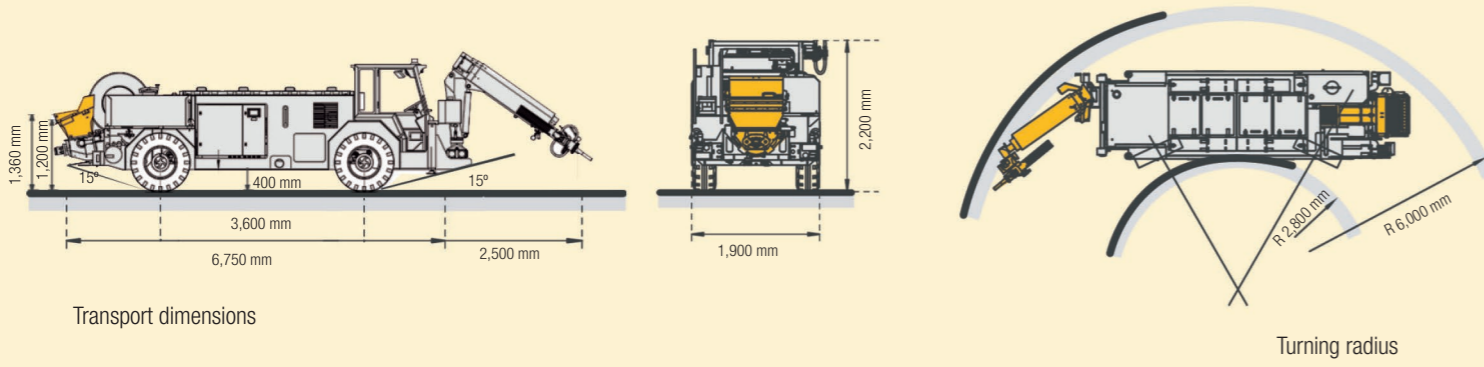
Delivery lines: pipes and hoses	DN40
---------------------------------	------

Cable reel

Operation	Manual or hydraulic
Cable	50 o 100 m

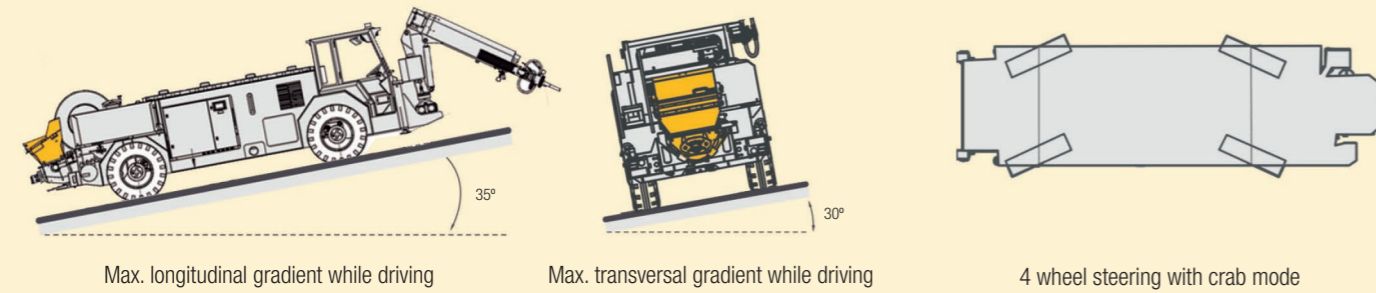
Data Sheet

Dimensions and turning radius with frontal cabin



Transport dimensions

Turning radius



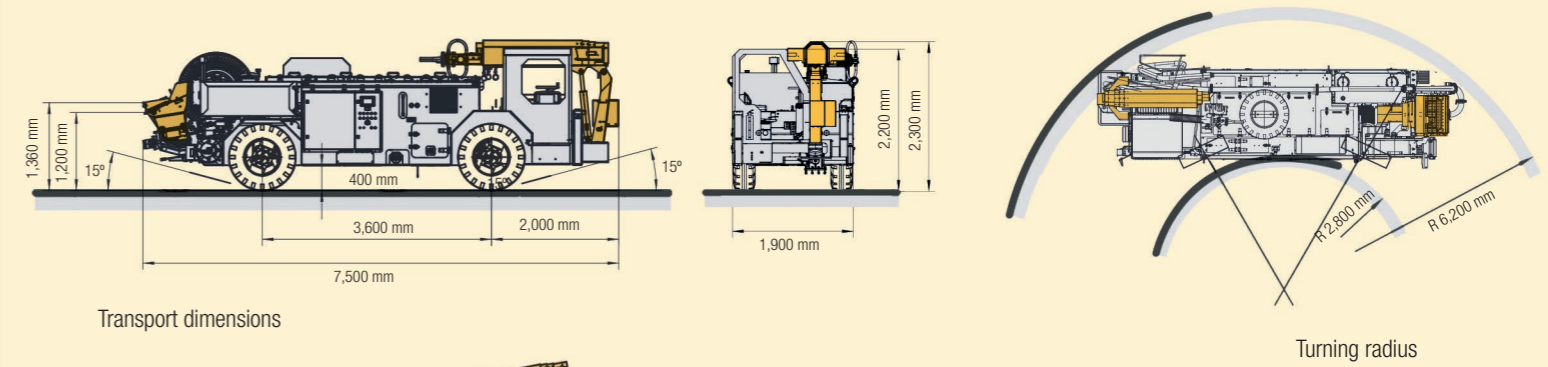
Max. longitudinal gradient while driving

Max. transversal gradient while driving

4 wheel steering with crab mode

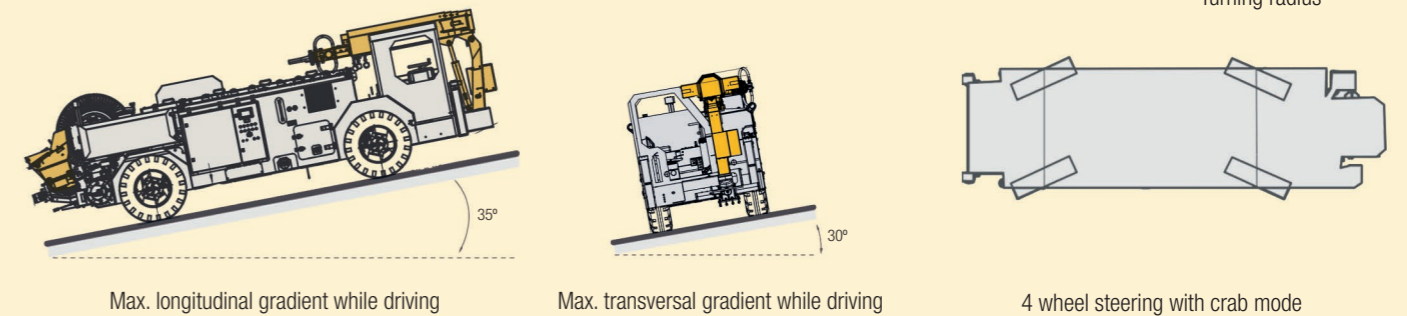
Weight: 13,000 kg (depends on optionals)

Dimensions and turning radius with lateral cabin



Transport dimensions

Turning radius



Max. longitudinal gradient while driving

Max. transversal gradient while driving

4 wheel steering with crab mode

Weight: 13,000 kg (depends on optionals)

Concrete pumping system

Pumping type	Electric
Concrete pump	PM 1507
Max. Flow (theor.)	20 m ³ /h
Max. pressure (theor.) on concrete	65 bar
Transport cylinder	150 mm
Cylinder dimensions (theoretical career)	700 mm
Electric engine power	37 kW
Full hopper capacity (with electric vibrator)	250 l

Engine

Norm	Tier 3	Tier 4
Engine power	106 kW	85 kW
Max. revolutions	2,200 rpm	2,300 rpm

Chassis

Type	Rigid
Driver cabin	FOPS-ROPS
Diesel tank	140/100 l (AdBlue)
Speed	20 km/h
Transmission	Hydrostatic
Steering	4WS/4WD
Braking system	Hydraulic
Filling height (without rubber bib)	1,200 mm
Max. transversal gradient while driving	10 %
Max. longitudinal gradient while driving	35 %

Additive system

Additive synchronization	
Type	Peristaltic
Adjustment range	60-500 l/h
Max. working pressure	7.5 bar
Additive tank (standard/special)	550 / 700 l
Inox additive tank	



Electricity

Power	85 kW
Protection grade	IP65
Voltage	400 V / 50 Hz - 440 V / 60 Hz

Rear camera and monitor

Rear camera	Color-Infrared
Monitor in the cabin	5,6"



Optionals

High pressure water pump for cleaning		
Flow	30 l/min	
Max. pressure	200 bar	
Optional additive pump		
Type	Hydraulic SPX-25	
Max. adjustment range	60-1200 l/h	
Max. working pressure	10 bar	
Compressor		
Compressor	PM 45	PM 55
Power engine	45 kW	55 kW
Max. air flow	7.2 m³/min	10 m³/min
Max. working pressure	7.5 bar	

Optionals
Closed cabin (HVAC)*
2° additive pump (transfer)
Special voltages
Catalytic converter/DPF
Automatic lubrication system
Fire extinguishing system DAFO Manual + Automatic
Solid wheels
Interlock when open door

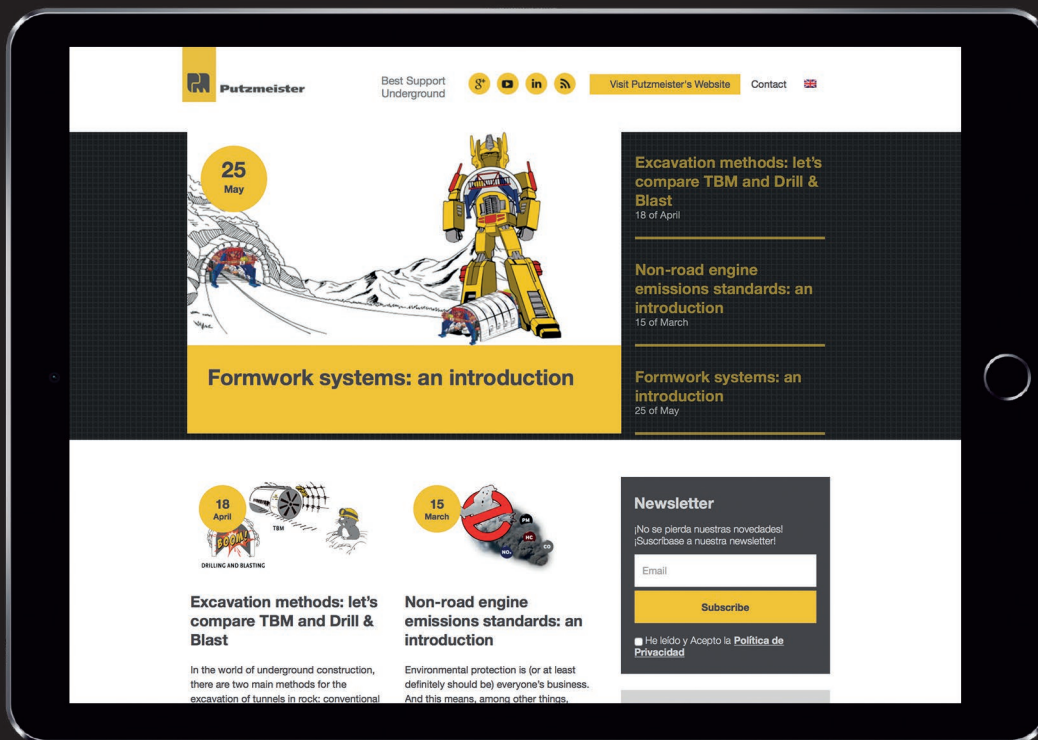
* Only with frontal cabin
Consult with Putzmeister for special configurations

Putzmeister Underground Technology

Visit our blog

Bestsupportunderground.com

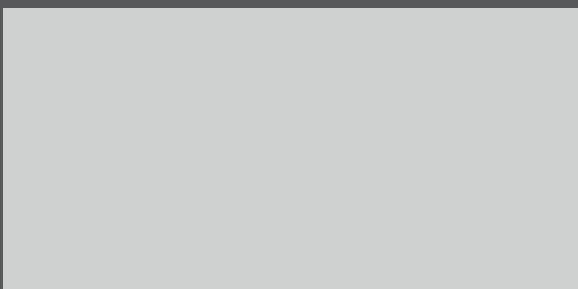
Shotcrete in underground mining
and much more...



This is a merely informative, non-binding document. Maximum theoretical values listed. Specifications are subject to change without prior notice. Photos and drawings are for illustrative purposes only. For available options, please consult the factory.

Subject to technical modifications and errors © by Putzmeister Concrete Pumps GmbH 2018. All rights reserved. Printed in Spain (1811) - UT 4755-2 EN

Distributed by:



Putzmeister Ibérica S.A.

Camino de Hormigueras 173 · 28031, Madrid (Spain)

Tel. +34 91 428 8100 · contacto@putzmeister.com

www.putzmeisterunderground.com