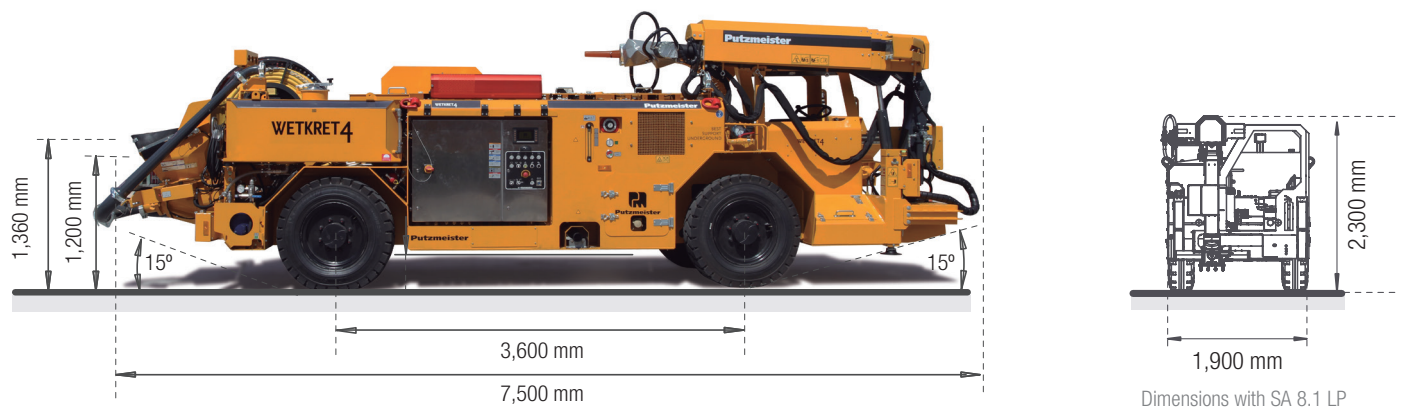
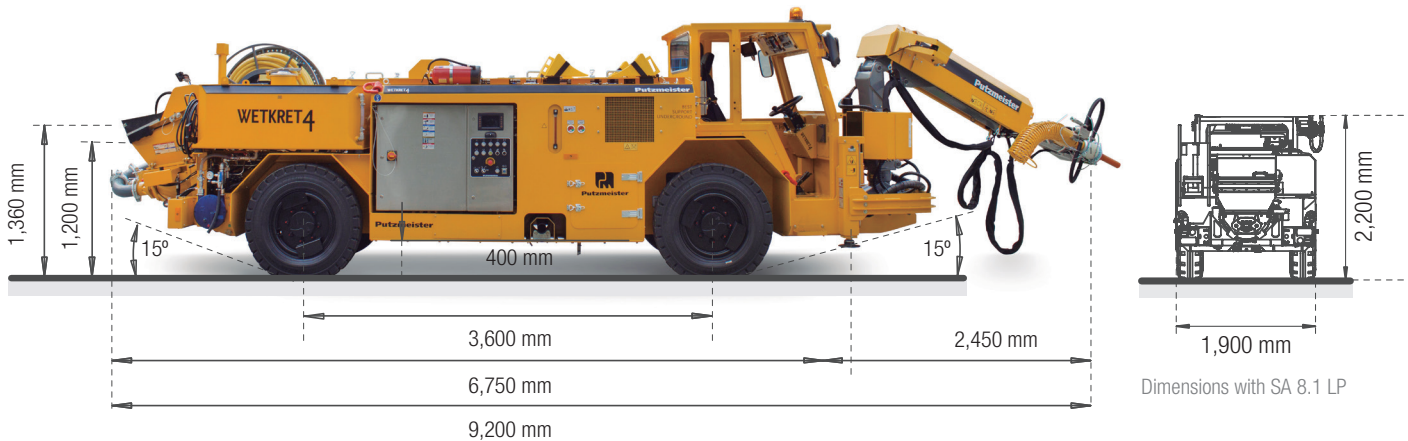


Concrete spraying equipment

Wetkret 4



Note: This is a merely informative, non-binding document. Maximum theoretical values listed. Specifications are subject to change without prior notice. Photos and drawings are for illustrative purposes only. For available options, please consult the factory.

Data sheet

General data			
Dimensions (L/W/H) with frontal cabin	mm	9,200/1,900/2,200*	
Dimensions (L/W/H) with lateral cabin	mm	7,500/1,900/2,300*	
Ground clearance	mm	400	
Max. weight (*depends on optionals)	kg	13,000	
Turning radius with frontal cabin (outer/inner)	mm	6,000/2,800	
Turning radius with lateral cabin (outer/inner)	mm	6,200/2,800	
*Dimensions with SA 8.1 LP			
Engine			
Norm		Tier 3	Tier 4f
Engine power	kW	106	85
Max. revolutions	rpm	2,200	2,300

Chassis		
Type		Rigid
Driver cabin		FOPS-ROPS
Diesel tank	l	140/100 (AdBlue)
Speed	km/h	20
Transmission		Hydrostatic 4WS/4WD
Steering		DANA 212
Braking system		Hydraulic
Filling height (without rubber bib)	mm	1,200
Max. transversal gradient while driving	%	10
Max. longitudinal gradient while driving	%	35

Data sheet

Concrete pumping system		
Pumping type		Electric
Concrete pump		PM 1507
Max. Flow (theor.)	m ³ /h	20
Max. pressure (theor.) on concrete	bar	65
Transport cylinder	mm	150
Cylinder dimensions (theoretical career)	mm	700
Electric engine power	kW	37
Full hopper capacity (with electric vibrator)	l	250
Additive system		
Additive synchronization		
Type		Peristaltic
Adjustment range	l/h	60-500
Max. working pressure	bar	7.5
Additive tank (standard/special)	l	550 / 700
Inox additive tank		

Spraying arm		SA 8.1 LP	SA 10.1*
Max. spraying reach (vertical/horizontal)	m	7.5 / 7	10 / 8.5
Turntable turning angle (frontal/lateral cabin)	°	180/250	180
Spraying head rotation	°	360	360
* only with frontal cabin			
Projector AL220			
Delivery lines: pipes and hoses	DN	40	
Electricity			
Electric panel			
Power	kW	85	
Protection grade	IP	65	
Voltage		400 V / 50 Hz - 440 V / 60 Hz	
Rear camera and monitor			
Rear camera	1	Color-Infrared	
Monitor in the cabin	1	5.6"	
Cable reel			
Operation		Manual or hydraulic	
Cable	m	50 or 100	

Optionals

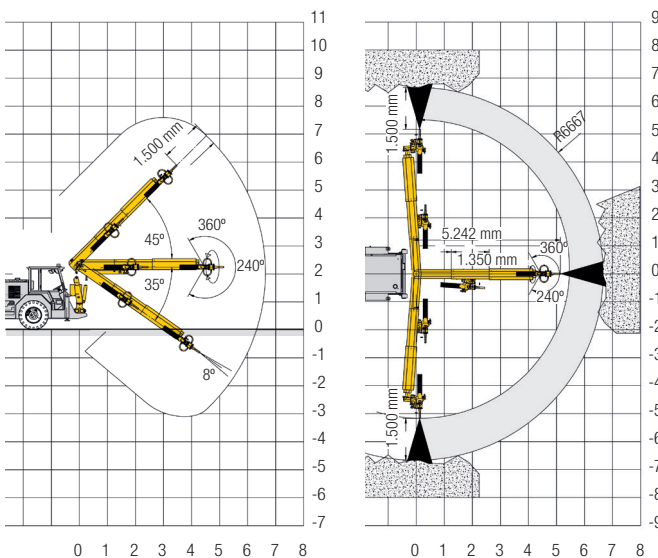
High pressure water pump for cleaning			
Flow	l/min	30	
Max. pressure	bar	200	
Optional additive pump			
Type	Hydraulic SPX-25		
Max. adjustment range	l/h	60-1,200	
Max. working pressure	bar	10	
Compressor			
Compressor	PM 45	PM 55	
Power engine	kW	45	55
Max. air flow	m ³ /min	7.2	10
Max. working pressure	bar	7.5	

Optionals	
Closed cabin (HVAC)	Only with frontal cabin
2° additive pump (transfer)	
Special voltages	
Catalytic converter/DPF	
Automatic lubrication system	
Fire extinguishing system	DAFO Manual + Automatic
Solid wheels	
Interlock when open door	

Consult with Putzmeister for special configurations

Spraying arm reach diagrams

Putzmeister SA 8.1 LP



Putzmeister SA 10.1

